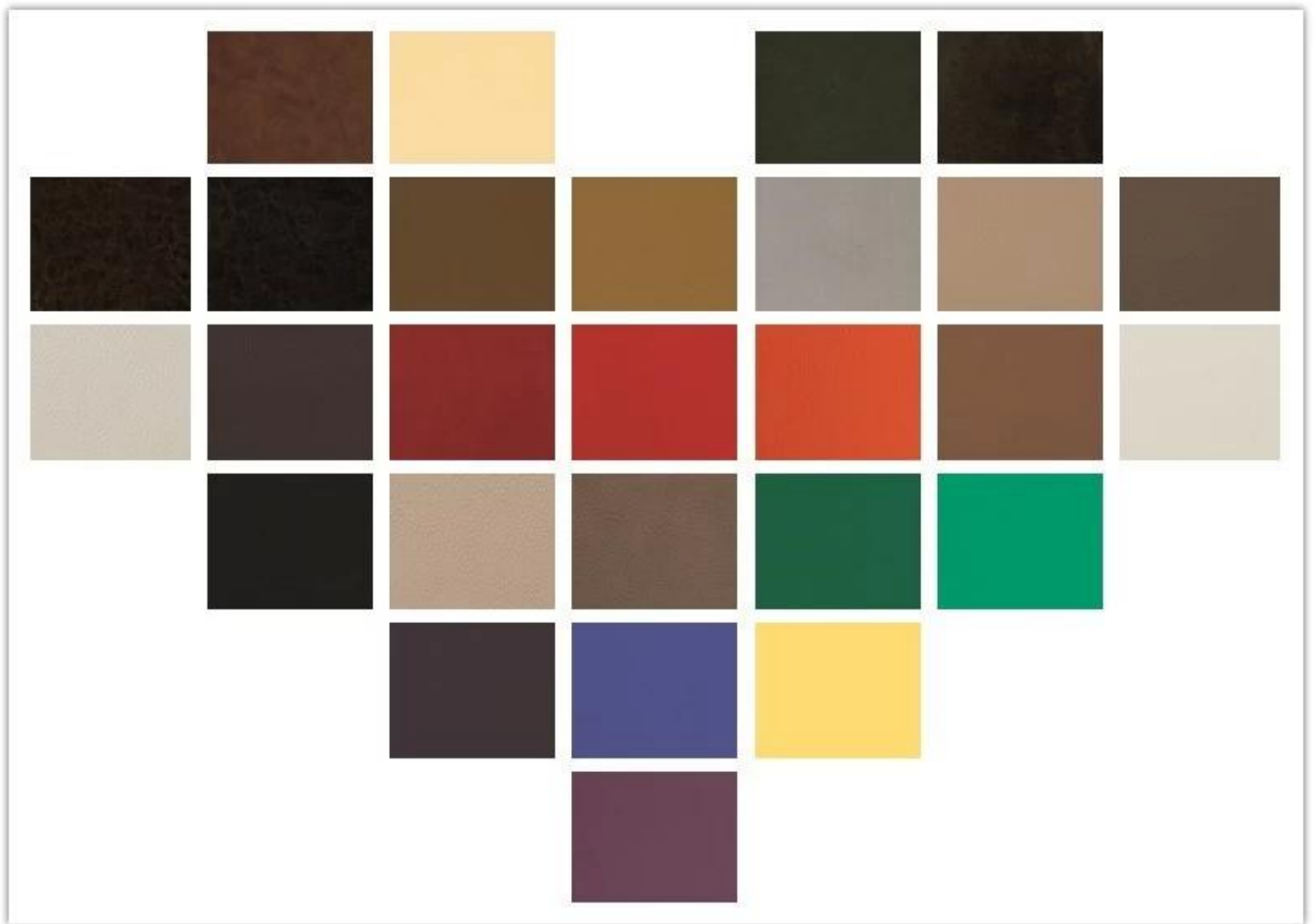

• PRODUCT INTRODUCTION •

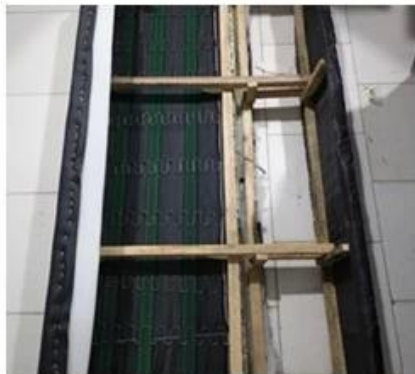
European Style Office Sofa Wholesaler China

ITEM NO.	S-1039	
Frame	Wooden frame	
Foam	±35-40kgs density original foam	
Foot	Metal Paint base	
Seat and Back cover	PU or Leather	
Package	PP woven bag	
L*W*H/cm		
CBM	1.7m ³ /set	
Loading Qty/pcs	20GP	40HQ
	16-20	45-48

• PARTS REFERENCE •



● WORKSHOP ●



• ENGINEERING CASE •



OUR PHOTOS



CERTIFICATE

- A. Own complete supply chain.
- B. 100% quality guaranteed.
- C. Reasonable price.
- D. Products are in various style.
- E. Good performance for delivery.
- F. Adequate inventory(components).

Best after-sale service:If it appear any quality complaints and disputes,we will establish of product information feedback system,establish service files,responsible for the quality of the accident identified and deal with our client .

FAQ

Q1:Can we have your sample?

A:Sure.Sample are available for each model.They can be ready in 7-15days upon receipt of payment.

Q2:Can you give us discount?

A:Discount is negotiable for large quantity.

Q3:Can you give warranty of your products?

A:Yes,we extend a 100% satisfaction guarantee on all items.We may give the warranty 5 years.

Q4:Are you manufacturer or trading company?

A:We are professional manufacturer for more than 10 years in furniture industry.

Q5:How about the payment terms?

A:We accept advance T/T(30% deposit before produce, 70% balance before delivery), other requirement pls discuss with salesman.

CONTACT US



Manager : Rachel

Whatsapp/Wechat:

0086-13590681820



E-mail:

rachel@new-city.cn