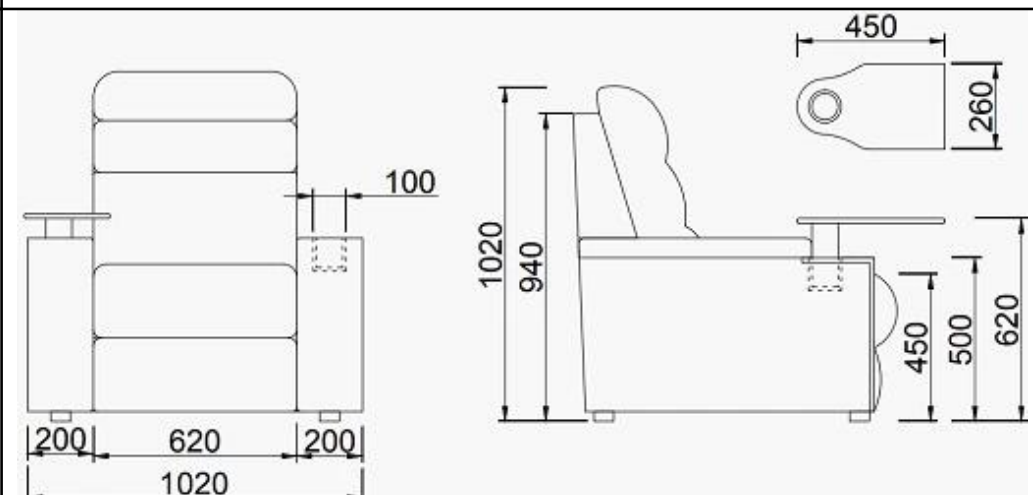

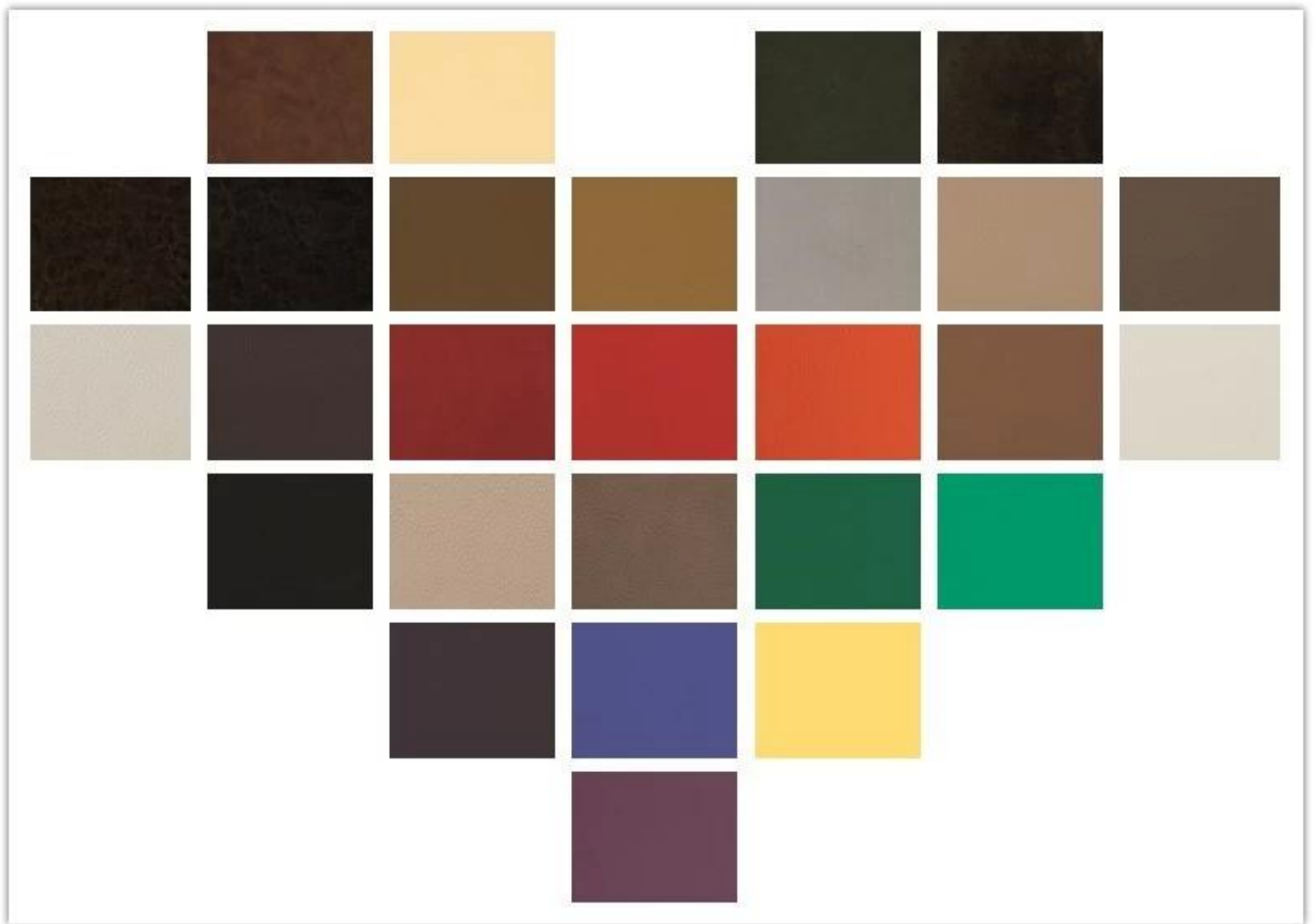


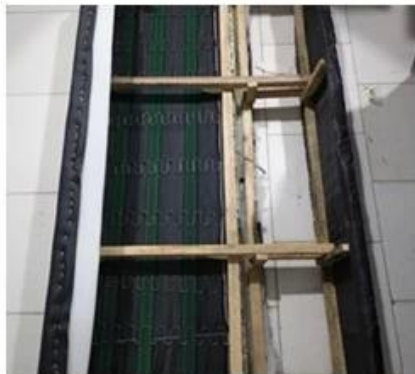
• PRODUCT INTRODUCTION •

ITEM	DESCRIPTION	
Upholstery	High quality PU	
Wood structure	High quality wood frame □solid and durable	
Foam	High Density Foam□40-50kgs/M ³ of seat,30-40kgs/M ³ of back	
Armrest top	PU cover with cup holder	
Leg panel	Plywood with PVC leather	
CBM	0.8/pcs	
Loading Qty/Seat	20GP	40HQ
	32	82
Package	KD	
Size/mm	 <p>Technical drawings of the chair showing front, side, and detail views with dimensions:</p> <ul style="list-style-type: none"> Front view: Total width 1020mm (200mm + 620mm + 200mm), seat height 100mm. Side view: Total height 1020mm, seat height 940mm, backrest height 450mm, base width 620mm, base depth 500mm, and base height 620mm. Detail view: Armrest top width 450mm and height 260mm. 	
Free Design	 <p>Two 3D perspective renderings of the chair in a stadium setting, showing the chair's placement and the overall seating arrangement.</p>	

• PARTS REFERENCE •



• WORKSHOP •



• ENGINEERING CASE •



OUR PHOTOS



CERTIFICATE



SHIPPING

- A. Depends on your qty and requirement of order ,
15-25 work days for 1*40HQ container, 15-35 days for 2*40HQ and so on.....
- B. EX works, FOB shenzhen, CIF, C&F ,LC and so on,
delivery terms discuss with salesman.

OUR SERVICE

- A. Own complete supply chain.
- B. 100% quality guaranteed.
- C. Reasonable price.
- D. Products are in various style.
- E. Good performance for delivery.
- F. Adequate inventory(components).

Best after-sale service:If it appear any quality complaints and disputes,we will establish of product information feedback system,establish service files,responsible for the quality of the accident identified and deal with our client .

FAQ

Q1:Can we have your sample?

A:Sure.Sample are available for each model.They can be ready in 7-15days upon receipt of payment.

Q2:Can you give us discount?

A:Discount is negotiable for large quantity.

Q3:Can you give warranty of your products?

A:Yes,we extend a 100% satisfaction guarantee on all items.We may give the warranty 5 years.

Q4:Are you manufacturer or trading company?

A:We are professional manufacturer for more than 10 years in furniture industry.

Q5:How about the payment terms?

A:We accept advance T/T(30% deposit before produce, 70% balance before delivery),
other requirement pls discuss with salesman.

CONTACT US



Manager : Rachel

Whatsapp/Wechat:

0086-13590681820



E-mail:

rachel@new-city.cn